

# SAFETY FOOTWEAR CATALOGUE

---

2020

---



Honeywell

**TABLE OF CONTENTS**

**04** European Standards and Sizes

**Honeywell:**

**06** Ultimate Footwear

**14** Athletic

**18** Bacou Original

**23** Bacou Original Specifics Construction

**25** Urban Evolution

**28** (i)XTREM Evolution

**33** Cocoon

**38** Temptation® City

**40** Executive

**42** Oil & Gas – Energy Range

**44** Bac'Run® PUN

**46** Nit'Lite®

**49** White Range

**51** Stitched Outdoor

**53** Firefighters Range

**55** Accessories

**Honeywell OTTER®:**

**57** Otter® Active

**59** Otter® Active Premium

**60** Otter® Active Basics

**61** Premium Protect

**64** Premium Sport

**65** Premium MFUS®

**67** Premium Cordura® Fabric

**68** Premium SYMPATEX®

**70** Basics Sport

**72** Basics Comfort

**73** Basics Black Line

**74** Otter Ladies

**75** Specific Construction

**76** Specific Winter

**77** Specific White





# **SAFETY FOOTWEAR:** **PROTECTION, COMFORT,** **WELLBEING, AND** **DURABILITY**

Across its footwear brands, Honeywell has developed a culture of innovation and expertise, to offer footwear with high added value that meets the requirements of a job, a specific environment or a geographical region.

Our products combine advanced technology, comfort and ergonomics to satisfy the needs of all our customers.

The knowledge and understanding of our partners' expectations ensure that we develop quality footwear that is durable and reliable, to provide functional, comfortable and attractive protection.

## **MANY YEARS OF EXPERIENCE IN SAFETY FOOTWEAR**

### **FOCUS ON WELL-BEING**

Being an expert in safety footwear means caring about the customer's well-being, finding the balance between excellent protection and real comfort. Honeywell offers a wide range of comfortable footwear inspired by the latest fashion trends and technological developments.

### **TECHNOLOGY & INNOVATION**

Our footwear ranges benefit from the latest results of Honeywell and Otter research and development: non-metallic toecaps, flexible and light weight shoes, slip resistant outsoles, technical textiles, modular insole system, ESD etc.

### **RIGOUR & QUALITY**

The Honeywell development expertise is combined with rigour and quality. All manufacturing is managed by a certified ISO 9001 quality assurance system. From the design of the footwear to the aftersales service, all tests are carried out to meet the latest EN Standard compliance.



## EN ISO 20345

CATEGORY	EN ISO 20345 REQUIREMENTS
<b>SB</b>	Basic requirements for shoes: toecap resistant to an impact of 200 Joules and crushing of 15kN
<b>S1</b>	Basic requirements + - Closed heel area - Antistatic properties - Heel energy absorption - Resistance to fuel oil
<b>S1P</b>	S1 + - Anti-puncture resistance (P)
<b>S2</b>	S1 + - Water penetration and absorption
<b>S3</b>	S2 + - Anti-puncture resistance - Cleated outsole

## EN ISO 20346 AND EN ISO 20347

	PROFESSIONAL USE	SYMBOL			
<b>EN ISO 20347</b>	Work footwear (without toecap)	<b>OB</b>	<b>01</b>	<b>02</b>	<b>03</b>

## ADDITIONAL REQUIREMENTS FOR SPECIFIC APPLICATIONS WITH RELEVANT MARKING SYMBOL

REQUIREMENT	SYMBOL
Penetration resistance	<b>P</b>
Electrical properties:	
- Conductive footwear	<b>C</b>
- Antistatic footwear	<b>A</b>
<b>Whole shoe</b>	
Resistance to inimical environments:	
- Heat insulation of the sole complex	<b>HI</b>
- Cold insulation of the sole complex	<b>CI</b>
- Energy absorption of the seat area	<b>E</b>
- Water resistance	<b>WR</b>
- Metatarsal protection	<b>M</b>
- Ankle protection	<b>AN</b>
- Cut resistance	<b>CR</b>
<b>Upper</b>	Water penetration and water absorption
	<b>WRU</b>
<b>Outsole</b>	Resistance to hot contact
	<b>HRO</b>
	Resistance to fuel oil
	<b>FO</b>

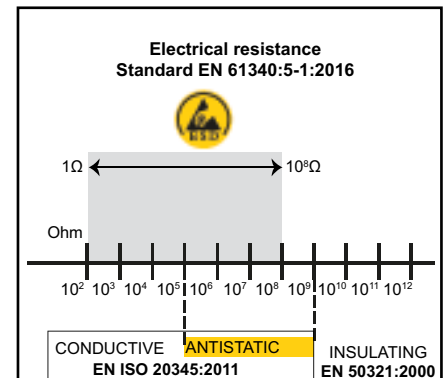
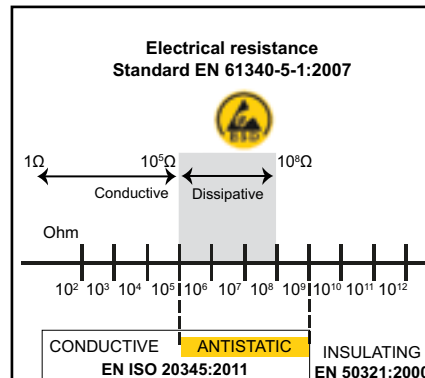


## ESD CERTIFICATION - 61340-5-1:2007

### IEC 61340-4-3

(Standard test methods for specific applications – Footwear)

- 2001
  - 2 categories
    - Conductive footwear
    - Dissipative footwear
  - 3 different class with pre-conditioning, conditioning and measurement
- 2017
  - No class, only one condition of test



### EN 61340-5-1

(Protection of electronic devices from electrostatic phenomena – General requirements)

- Footwear shall be marked conductive or dissipative.  
 The marking shall include the environmental class and footwear type
- 2001
  - Footwear shall be marked conductive or dissipative.
  - The marking shall include the environmental class and footwear type
  - Conductive footwear
    - $< 1 \times 10^5 \Omega$
  - Dissipative footwear
    - $1 \times 10^5 \Omega \leq R \leq 1 \times 10^8 \Omega$
- 2016
  - No special marking on the footwear
  - $R \leq 1 \times 10^8 \Omega$

### EN IEC 61340-4-3 :2017iv

- The Ultimate Footwear range has been laboratory tested to meet this standard and is identified as suitable for use in an Electrostatic Discharge Protected Area (EPA).

## FIREFIGHTER STANDARD: EN 15090:2012

Minimum performance requirements and corresponding test methods for fire service footwear to be used in fire fighting and related activities.

### DGUV 112-191iii

This regulation covers the use of orthopedic insoles in the workplace. It means that any modification of the safety shoes, such as replacing the original insoles provided by the manufacturer, is prohibited by the CE-standard. Any change made to safety footwear results in noncompliance to ISO 20345:2011 and in case of accident, the wearer will no longer be protected by their accident insurance. However, Honeywell Ultimate Footwear range, when fitted with VAUPEL orthopedic insoles, has been tested and certified to continue to meet the requirements of the standard.



### SRC CERTIFICATION > SLIP RESISTANCE PERFORMANCE OF THE OUTSOLE

Marking	Surface	Lubricant	Friction factor: requirements flat	Friction factor: requirements heel
<b>SRA</b>	Ceramic plates	Sodium lauryl sulfate	$\geq 0.32$	$\geq 0.28$
<b>SRB</b>	Steel	Glycerol	$\geq 0.18$	$\geq 0.13$
<b>SRC</b>	Meets requirements for the 2 above tests (SRA + SRB)			

### SIZE CONVERSION CHART

FR	35	36	37	38	39	40	41	42	43	44	45	46	47	48	49
UK	3	3.5	4	5	6	6.5	7	8	9	10	10.5	11	12	13	13.5



### **PROTECTION THAT FLOWS, FROM HEEL TO TOE!**

For safety footwear, comfort should be second only to protection. The Honeywell Ultimate Footwear offers both, with protection and comfort that flows from heel to toe. Mimicking the foot's natural movement, the Ultimate Footwear wave concept enables smooth, effortless motion over any terrain. The protective front shield and reflective insert ensure safety, and cleats for indoor and outdoor grip provide stability. Honeywell innovated a better safety shoe with advanced safety features and support

#### **HONEYWELL INNOVATED A BETTER SAFETY SHOE WITH ADVANCED SAFETY FEATURES AND SUPPORT**

##### **Available with**

- Leather and water-repellent textile upper
- Poromax® 3D moisture absorbent lining
- Perforated breathable microfiber upper
- Thermy-tex antibacterial treatment
- Artico® 3D lining

##### **Slip resistance**

- Large cleats for outdoor grip
- All-road cleats at the midsole for grip on any surface
- Micro cleats for smooth indoor surfaces
- Fluid evacuation sole pattern

##### **REFLECTIVE INSERTS IN THE OUTSOLE – keeping wearers visible at night**



##### **Ergonomic Wave Concept**

- Protection and comfort that flows from heel to toe, to allow a natural walking motion

##### **Wear-off indicators**

- A triangle appears when it has reached a high level of abrasion



**Watch Video**



## A COMFORTABLE FIT – ANYWHERE

The Honeywell Ultimate Footwear range provides a comfortable fit with almost any industrial environment, and almost any user. Boots and shoes from the range offer suitable protection against all likely hazards, and comfort for day-long wear, in:

- Construction
- Assembly
- Transportation
- Light industry
- Utilities
- Automotive
- Manufacturing
- Energy
- Logistics



### EN IEC 61340-4-3 :2017iv

The Ultimate Footwear range has been laboratory tested to meet this standard and is identified as suitable for use in an Electrostatic Discharge Protected Area (EPA).



#### High shock absorption heel

- Using carefully positioned holes for comfort while walking or standing for long periods

#### Composite toecap

- Ultra-light for greater comfort, heat and cold transfer elimination, and corrosion resistance

### FLEXIUM™ anti-perforation interlayer

- Prevents puncturing of sole by sharp objects

### MODULAR INSOLE FITTING SYSTEM – Standard or customized for a perfect fit of narrow or wide feet

The fitting can be adapted by use of a choice of two specially-made insoles for “wide feet” or “narrow feet”. The Adjustable fitting system, featuring specialist insoles, allows users to adjust the space inside the shoe to achieve a tighter fit to suit narrow feet or to create more room for the comfort of users with wider feet.



**Ultimate Narrow Insole**  
Ref: 62 461 99



**Ultimate Wide Insole**  
Ref: 62 462 00

**SPRINT**

S3 HI CI SRC

**NEW** **METAL FREE**

- 100% metal free
- Low-cut style
- Leather upper and water-repellent textile
- Poromax® 3D moisture absorbent lining
- Non-metallic FLEXIUM™ anti-perforation interlayer
- ESD sole
- Thermy-tex antibacterial treatment
- Dual density polyurethane outsole
- EN 61340:5-1:2016
- EN ISO 20345:2011 S3 HI CI SRC



Watch Video



REF.	DESCRIPTION	SIZE
<b>62 461 63</b>	Sprint Low-cut	35-49



**SPRINT MID**

S3 HI CI SRC

**NEW** **METAL FREE**

- 100% metal free
- Mid-cut style
- Leather upper and water-repellent textile
- Poromax® 3D moisture absorbent lining
- Non-metallic FLEXIUM™ anti-perforation interlayer
- ESD sole
- Thermy-tex antibacterial treatment
- Dual density polyurethane outsole
- EN 61340:5-1:2016
- EN ISO 20345:2011 S3 HI CI SRC



Watch Video



REF.	DESCRIPTION	SIZE
<b>62 461 64</b>	Sprint Mid-cut	35-49



**JUMP**

S3 HI CI SRC

**NEW** **METAL FREE**

- 100% metal free
- Low-cut style
- Water-repellent leather upper
- Artico® 3D lining
- Non-metallic FLEXIUM™ anti-perforation interlayer
- ESD sole
- Dual density polyurethane outsole
- EN 61340:5-1:2016
- EN ISO 20345:2011 S3 HI CI SRC



Watch Video



REF.	DESCRIPTION	SIZE
<b>62 461 65</b>	Jump Low-cut	35-49





## JUMP MID

S3 HI CI SRC

**NEW** **METAL FREE**

- 100% metal free
- Mid-cut style
- Water-repellent leather upper
- Artico® 3D lining
- Non-metallic FLEXIUM™ anti-perforation interlayer
- ESD sole
- Dual density polyurethane outsole
- EN 61340:5-1:2016
- EN ISO 20345:2011 S3 HI CI SRC

REF.	DESCRIPTION	SIZE
 <b>62 461 66</b>	Jump Mid-cut	35-49



Watch Video



**PU. 2D**

## SQUAT

S1P HI CI SRC

**NEW** **METAL FREE**

- 100% metal free
- Low-cut style
- Perforated breathable microfiber upper
- Artico® 3D lining
- Non-metallic FLEXIUM™ anti-perforation interlayer
- ESD sole
- Dual density polyurethane outsole
- EN 61340:5-1:2016
- EN ISO 20345:2011 S1P HI CI SRC

REF.	DESCRIPTION	SIZE
 <b>62 461 69</b>	Squat Low-cut	35-49



Watch Video



**PU. 2D**

## SQUAT MID

S1P HI CI SRC

**NEW** **METAL FREE**

- 100% metal free
- Mid-cut style
- Perforated breathable microfiber upper
- Artico® 3D lining
- Non-metallic FLEXIUM™ anti-perforation interlayer
- ESD sole
- Dual density polyurethane outsole
- EN 61340:5-1:2016
- EN ISO 20345:2011 S1P HI CI SRC

REF.	DESCRIPTION	SIZE
 <b>62 461 83</b>	Squat Mid-cut	35-49



Watch Video



**PU. 2D**

**WIN**

**NEW METAL FREE**

**S3 HI CI SRC**

- 100% metal free
- Low-cut style
- Breathable microfiber upper
- Artico® 3D whole-foot lining
- Non-metallic FLEXIUM™ anti-perforation interlayer
- ESD sole
- Dual density polyurethane outsole
- EN 61340:5-1:2016
- EN ISO 20345:2011 S3 HI CI SRC

REF.	DESCRIPTION	SIZE
62 461 67	Win Low-cut	35-49



**WIN MID**

**NEW METAL FREE**

**S3 HI CI SRC**

- 100% metal free
- Mid-cut style
- Breathable microfiber upper
- Artico® 3D whole-foot lining
- Non-metallic FLEXIUM™ anti-perforation interlayer
- ESD sole
- Dual density polyurethane outsole
- EN 61340:5-1:2016
- EN ISO 20345:2011 S3 HI CI SRC

REF.	DESCRIPTION	SIZE
62 461 68	Win Mid-cut	35-49



**SPEED**

**NEW METAL FREE**

**S1P HI CI SRC**

- 100% metal free
- Low-cut style
- Perforated breathable microfiber upper
- Reflective inserts
- Multifunction indoor/outdoor cleats
- Artico® 3D whole-foot lining
- Non-metallic FLEXIUM™ anti-perforation interlayer
- ESD sole
- Polyurethane/thermoplastic polyurethane outsole
- EN 61340:5-1:2016
- EN ISO 20345:2011 S1P HI CI SRC

REF.	DESCRIPTION	SIZE
62 461 71	Speed Low-cut	35-49





**PRIME**

**NEW METAL FREE**

**S3 HI CI SRC**

- 100% metal free
- Low-cut style
- Breathable microfiber upper
- Reflective inserts
- Multifunction indoor/outdoor cleats
- Artico® 3D whole-foot lining
- Non-metallic FLEXIUM™ anti-perforation interlayer
- ESD sole
- Polyurethane/thermoplastic polyurethane outsole
- EN 61340:5-1:2016
- EN ISO 20345:2011 S3 HI CI SRC

REF.	DESCRIPTION	SIZE
62 461 72	Prime Low-cut	35-49



**PU.TPU**

**PRIME MID**

**NEW METAL FREE**

**S3 HI CI SRC**

- 100% metal free
- Mid-cut style
- Breathable microfiber upper
- Reflective inserts
- Multifunction indoor/outdoor cleats
- Artico® 3D whole-foot lining
- Non-metallic FLEXIUM™ anti-perforation interlayer
- ESD sole
- Polyurethane/thermoplastic polyurethane outsole
- EN 61340:5-1:2016
- EN ISO 20345:2011 S3 HI CI SRC

REF.	DESCRIPTION	SIZE
62 461 73	Prime Mid-cut	35-49



**PU.TPU**

**BOSS**

**NEW METAL FREE**

**S1P HI CI SRC**

- 100% metal free
- Low-cut sandal
- Perforated breathable microfiber upper
- Reflective inserts
- Multifunction indoor/outdoor cleats
- Artico® 3D whole-foot lining
- Non-metallic FLEXIUM™ anti-perforation interlayer
- ESD sole
- Polyurethane/thermoplastic polyurethane outsole
- EN 61340:5-1:2016
- EN ISO 20345:2011 S1P HI CI SRC

REF.	DESCRIPTION	SIZE
62 461 74	Boss Low-cut	35-49



**PU.TPU**



**Watch Video**

**CARRY**

**NEW METAL FREE**

S1P HI CI SRC

- 100% metal free
- Low-cut style
- Perforated breathable microfiber upper
- Reflective inserts
- Multifunction indoor/outdoor cleats
- Artico® 3D whole-foot lining
- Non-metallic FLEXIUM™ anti-perforation interlayer
- ESD sole
- Polyurethane/thermoplastic polyurethane outsole
- EN 61340:5-1:2016
- EN ISO 20345:2011 S1P HI CI SRC

REF.	DESCRIPTION	SIZE
62 461 75	Carry Low-cut	35-49



**MOVE**

**NEW METAL FREE**

S3 HI CI SRC

- 100% metal free
- Low-cut style
- Breathable microfiber upper
- Reflective inserts
- Multifunction indoor/outdoor cleats
- Artico® 3D whole-foot lining
- Non-metallic FLEXIUM™ anti-perforation interlayer
- ESD sole
- Polyurethane/thermoplastic polyurethane outsole
- EN 61340:5-1:2016
- EN ISO 20345:2011 S3 HI CI SRC

REF.	DESCRIPTION	SIZE
62 461 76	Move Low-cut	35-49



**MOVE MID**

**NEW METAL FREE**

S3 HI CI SRC

- 100% metal free
- Mid-cut style
- Breathable microfiber upper
- Reflective inserts
- Multifunction indoor/outdoor cleats
- Artico® 3D whole-foot lining
- Non-metallic FLEXIUM™ anti-perforation interlayer
- ESD sole
- Polyurethane/thermoplastic polyurethane outsole
- EN 61340:5-1:2016
- EN ISO 20345:2011 S3 HI CI SR

REF.	DESCRIPTION	SIZE
62 461 77	Move Low-cut	35-49





**HIT**

S1P HI CI SRC

**NEW**

**METAL FREE**

- 100% metal free
- Low-cut sandal
- Perforated breathable microfiber upper
- Reflective inserts
- Multifunction indoor/outdoor cleats
- Artico® 3D whole-foot lining
- Non-metallic FLEXIUM™ anti-perforation interlayer
- ESD sole
- Polyurethane/thermoplastic polyurethane outsole
- EN 61340:5-1:2016
- EN ISO 20345:2011 S3 HI CI SRC



REF.	DESCRIPTION	SIZE
62 461 78	Hit Low-cut	35-49





## **ATHLETIC**

### **FOOT SUPPORT, STABILITY CONTROL AND GRIP**

Thanks to its PPE expertise, the Honeywell R&D team has developed an exclusive dual density TPU sole that optimizes shock absorption, flexibility and slip resistance on all types of surfaces. This technology ensures excellent comfort under all circumstances to even the most demanding customers.

#### **ATHLETIC PU/TPU OUTSOLE** **PU. TPU**

##### **Self-cleaning sole**

- Cleated design allowing fluid evacuation.

##### **Stability**

- Rigid inserts (70 SH) to optimize the physical and chemical properties of TPU.
- Anti-torsion effect and walking stability.

##### **Absorption**

of shocks and vibration.

##### **Flexibility**

- The flexibility line respects the biomechanics of the foot, makes working in a flexed position easier and reduces fatigue.

##### **Grip**

- Large softer TPU surface (SH 64) in direct contact with the ground.
- Excellent grip and shock absorption.
- Increased resistance to abrasion.



**ASCENDER**

**METAL FREE**

S3 CI SRC

- Water resistant leather and textile upper
- Poromax® 3D lining: breathable, absorbent, fast drying
- Reinforcement over toecap
- Speed lacing system and lace pocket
- Padded tongue with watertight bellows
- Coolmax® insole for an optimal perspiration absorption
- Injected PU/TPU outsole to optimize shock absorption, flexibility and slip resistance on all surfaces
- EN ISO 20345:2011 S3 CI SRC

REF.	DESCRIPTION	SIZE
62 438 50	Ascender	37-47



**ASCENDER MID**

**METAL FREE**

S3 CI SRC

- Water resistant leather and textile upper
- Poromax® 3D lining: breathable, absorbent, fast drying
- Reinforcement over toecap
- Speed lacing system and lace pocket
- Padded tongue with watertight bellows
- Coolmax® insole for an optimal perspiration absorption
- Injected PU/TPU outsole to optimize shock absorption, flexibility and slip resistance on all surfaces
- EN ISO 20345:2011 S3 CI SRC

REF.	DESCRIPTION	SIZE
62 438 51	Ascender Mid	37-47



**FRESCO**

**METAL FREE**

S1P CI SRC

- Suede leather and mesh upper
- Poromax® 3D lining: breathable, absorbent, fast drying
- Reinforcement over toecap
- Specific design to optimize breathability and keep feet dry
- Coolmax® insole for an optimal perspiration absorption
- Injected PU/TPU outsole to optimize shock absorption, flexibility and slip resistance on all surfaces
- EN ISO 20345:2011 S1P CI SRC

REF.	DESCRIPTION	SIZE
62 438 54	Fresco	37-47





**FRESCO MID**

S1P CI SRC

**METAL FREE**

- Suede leather and mesh upper
- Poromax® 3D lining: breathable, absorbent, fast drying
- Toe cap reinforcement
- Specific design to optimize breathability and keep feet dry
- Coolmax® insole for an optimal perspiration absorption
- Injected PU/TPU outsole to optimize shock absorption, flexibility and slip resistance on all surfaces
- EN ISO 20345:2011 S1P CI SRC

REF.	DESCRIPTION	SIZE
62 438 55	Fresco Mid	37-47



**BOOSTER BLACK**

S1P CI SRC

**METAL FREE**

- Suede leather and mesh upper
- 3D mesh moisture management lining
- Reinforcement over toecap
- Coolmax® insole for an optimal perspiration absorption
- Injected PU/TPU outsole to optimize shock absorption, flexibility and slip resistance on all surfaces
- EN ISO 20345:2011 S1P CI SRC

REF.	DESCRIPTION	SIZE
62 438 53	Booster Black	37-47



**PODIUM**

S3 CI SRC

**METAL FREE**

- Water-resistant nubuck leather upper
- Poromax® 3D lining: breathable, absorbent, fast drying and quick drying
- Padded tongue with watertight bellows
- Coolmax® insole for an optimal perspiration absorption
- Injected PU/TPU outsole to optimize shock absorption, flexibility and slip resistance on all surfaces
- EN ISO 20345:2011 S3 CI SRC

REF.	DESCRIPTION	SIZE
62 438 29	Podium	37-47



**ASCENDER ESD**

**METAL FREE**

S3 CI SRC

- Water resistant leather and textile upper
- Poromax® 3D lining: breathable, absorbent, fast drying
- Reinforcement over toecap
- Speed lacing system and lace pocket
- Padded tongue with gussets
- Specific ESD insole
- Injected PU/TPU outsole to optimize shock absorption, flexibility and slip resistance on all surfaces
- EN ISO 20345:2011 S3 CI SRC
- EN 61340-4-3:2001 Class 3 table 1



REF.	DESCRIPTION	SIZE
 62 438 57	Ascender ESD	37-47





## BACOU ORIGINAL

### TRUST THE EXPERTS IN PROFESSIONAL FOOTWEAR

With the Bacou Original range, Honeywell offers models designed with one aim: to be aligned with user expectations, whatever the sector of activity (industry, construction, transport/logistics, etc)..

**HIGH-PERFORMANCE PU2D OUTSOLE INJECTED, SRC CERTIFIED** **PU, 2D**

#### Features & benefits

- Dual density polyurethane: PU2D
- Comfort layer of density 0.5: guarantees lightness and flexibility, ensures shock absorption and protects against changes in temperature
- Outsole layer of density 1: resistant to abrasion, fuel oil and grease
- High slip resistance due to well defined cleat design: wide, deep and self-cleaning
- Energy absorption capacity: > 20 joules
- Excellent resistance to abrasion: Volume loss < 150 mm<sup>3</sup> (with a load of 10N = 1 kg)
- Extension before tearing 650%
- Optimised resistance to repeated flexing twice the requirement of the standard (> 60,000: standard > 30,000)
- Resistant to acids and alkalis limited to low concentrations



#### Specially designed flexion lines

- To respect the foot's biomechanical action

#### Channels to evacuate fluids:

- Prevent slipping
- Fluids are directly evacuated from initial heel impact

#### Marked heel

- Heel shock absorber for greater comfort
- Marked heel for excellent stability on all types of surfaces



### Lining with 3D structure

- Complies with the requirements of the new EN ISO 20345:2011 standard
- Double the number of test cycles for abrasion:
  - 51,200 cycles in dry conditions
  - 25,600 cycles in wet conditions

### Water-resistant full grain or suede leather uppers

- Exceptional breathability: leathers 6 times more breathable than the minimum requirements of the standard
- Water-resistant protection that is above the standard: 10 times more resistant to water penetration

BREATHABILITY	WATER PENETRATION RESISTANCE
ISO 20345:2011 > 0.8	ISO 20345:2011 < 2mg
Honeywell 4.8	Honeywell 0.2mg

### Insole



- Double density PU foam for intensive use
- Removable: easy maintenance and longevity
- Antibacterial and anti-odour
- Antistatic for optimum efficiency
- Comfort pad under the heel: prevents injury and muscle fatigue
- Evacuation channels: ensure the circulation of air under the foot when walking

### Padded ankle collar and tongue

- Adapted to the user's foot shape
- Ensures comfort when worn for long periods

### Lateral watertight bellows

- Prevents liquids and dust entering the shoe

### Anti-puncture sole



- Stainless steel: efficient technology covering the most extensive panel of risks
- Anti-puncture resistance: over 1,100 with spike of 4.5mm

### SPACIUM™ 200J toecap in injected polymer



- Non-metallic: 50% lighter than steel
- Wide toecap for greater comfort: suitable for all types of feet
- Metal free
- Thermal insulation
- Unalterable



**BACOU SMILO & BACOU SINRA**

S3 HI CI SRC

- Water-resistant leather and textile upper
- Reinforced protection over the toecap
- Antibacterial lining with 3D structure
- Lateral watertight bellows
- Padded ankle collar and tongue
- EN ISO 20345:2011 S3 HI CI SRC

REF.	DESCRIPTION	SIZE
62 461 03	Bacou Smilo	39-49
62 461 04	Bacou Sinra	39-49



Bacou Smilo

Bacou Sinra



**BACOU HEPTO & BACOU HALTICA**

S3 HI CI SRC

- Water-resistant leather upper
- System of overlap seams to avoid water penetration
- Limited lateral stitching
- Retro-reflective side band
- Antibacterial lining with 3D structure
- Lateral watertight bellows
- Padded ankle collar and tongue
- EN ISO 20345:2011 S3 HI CI SRC

REF.	DESCRIPTION	SIZE
62 461 12	Bacou Hepto	39-48
62 461 13	Bacou Haltica	39-48



Bacou Hepto

Bacou Haltica



**BACOU CALEO & BACOU CERATA**

S3 HI CI SRC

- Water-resistant oiled leather and textile upper
- Reinforced protection over the toecap and back
- Antibacterial lining with 3D structure
- Lateral watertight bellows
- Padded ankle collar and tongue
- EN ISO 20345:2011 S3 HI CI SRC

REF.	DESCRIPTION	SIZE
62 461 01	Bacou Caleo	39-49
62 461 02	Bacou Cerata	39-49



Bacou Caleo

Bacou Cerata



**BACOU PLATEO & BACOU PLOMITA**  
S3 HI CI SRC

- Water-resistant leather upper
- Antibacterial lining with 3D structure
- Lateral watertight bellows
- Padded ankle collar and tongue
- EN ISO 20345:2011 S3 HI CI SRC

REF.	DESCRIPTION	SIZE
62 461 05	Bacou Plateo	39-48
62 461 06	Bacou Plomita	39-48



Bacou Plateo

Bacou Plomita



**BACOU SILUO & BACOU SOLANA**  
S1P HI CI SRC

- Suede upper with ventilated mesh
- Flexing area at the forefoot, in breathable textile
- Antibacterial lining with 3D structure
- Lateral bellows
- Padded ankle collar and tongue
- EN ISO 20345:2011 S1P HI CI SRC

REF.	DESCRIPTION	SIZE
62 461 09	Bacou Siluo	39-48
62 461 10	Bacou Solana	39-48



Bacou Siluo

Bacou Solana



**BACOU ACANTO & BACOU ACANTI**  
S1P\* HI CI SRC & S1 HI CI SRC

- Perforated suede upper
- Antibacterial lining with 3D structure
- Lateral bellows
- Padded ankle collar and tongue
- EN ISO 20345:2011 S1P\* HI CI SRC

**Bacou Acanti:**

- Same model without anti-puncture sole
- EN ISO 20345:2011 S1 HI CI SRC

REF.	DESCRIPTION	SIZE
62 461 07	Bacou Acanto	39-49
62 461 08	Bacou Acanti	39-49



Bacou Acanto

Bacou Acanti



\*S1P, valid only for the Bacou Acanto model.



### BACOU SOLANUM

S1P SRC

- Breathable microfibre upper
- Self-gripping strap fastening
- Antibacterial lining with 3D structure
- Padded ankle collar and tongue
- EN ISO 20345:2011 S1P SRC

REF.	DESCRIPTION	SIZE
62 461 11	Bacou Solanum	39-49



### BACOU TYLEX & BACOU SILVEX

S3 SRC\* & S3 CI SRC

- Water-resistant oiled leather upper
- Extra wide pull-on lugs
- Few lateral seams
- EN ISO 20345:2011 S3 SRC

#### Bacou Silvex:

- Same model warm fleece lining
- EN ISO 20345:2011 S3 CI SRC

REF.	DESCRIPTION	SIZE
62 461 20*	Bacou Tylex	39-49
62 461 21	Bacou Silvex	39-49



Bacou Tylex

Bacou Silvex



### BACOU VENATO

S3 WR SRC

- Water-resistant oiled leather and textile upper
- Waterproof-breathable SYMPATEX® membrane
- Ideal for wet outdoor environments
- EN ISO 20345:2011 S3 WR SRC

REF.	DESCRIPTION	SIZE
62 461 25	Bacou Venato	39-47



**BACOU ORIGINAL SPECIFICS CONSTRUCTION****BACOU ORIGINAL SPECIFICS CONSTRUCTION**

Protection, durability, comfort. Honeywell offers models of safety footwear, designed with one objective: to provide an optimal response to the extreme risks and pressures of the construction sector. The footwear provides comfort throughout the day and excellent durability.

**BACOU PRO BTP**

S3 CI SRC

- NEW Higher upper for improved foot stability
- NEW Absorbent Artico® 3D lining for breathability and sweat evacuation
- NEW Urban PU2D outsole with strong grip - very adapted to light construction
- NEW Flexible supple microfiber tongue for improved level of comfort
- Ergonomic back flex and padded ankle collar for increased flexibility and movement comfort
- Metallic eyelet end hooks
- Oiled, leather-treated fabric designed for oil and water resistance
- EN ISO 20345:2011 S3 CI SRC

REF.	DESCRIPTION	SIZE
62 461 50	Bacou Pro BTP	35-49

**BACOU HISTRIO BTP**

S3 SRC

- Microfiber ankle boot for flexibility and resistance to scratches, with retro-reflective lateral band for improved visibility
- Urban PU2D outsole for preventing slips and falls with a strong grip
- Padded ankle collar and tongue for increased ease of movement and comfort
- Antibacterial lining with 3D structure for enhanced breathability and quick-drying sweat removal
- Lateral watertight bellows for preventing liquid, dust, and materials from entering
- Lacing system with self-blocking hooks designed for robust ankle support in extreme conditions
- Stainless-steel anti-puncture midsole for excellent protection against perforation via the sole
- EN ISO 20345:2011 S3 SRC

REF.	DESCRIPTION	SIZE
62 461 53	Bacou Histrio BTP	38-49



**BACOU ORIGINAL SPECIFICS CONSTRUCTION****BACOU HULSO BTP**

## HRO S3 SRC

- NEW Breathable ankle collar and upper quarter for dramatically increased breathability and foot comfort
- NEW Absorbent artico liner for enhanced breathability and sweat removal with a quick-drying liner
- NEW (i)XTREM HRO PU/Nitrile outsole which includes cleats for maximum grip and protection against falls
- NEW Protective reinforced sewed overcap which prevents tearing and improves durability of boot
- Reinforced rivets and triple stitching for increased boot durability and longevity
- Metallic eyelet end hooks
- Light and strong microfiber for ensured lightweight comfort and durability for tough construction environments
- EN ISO 20345:2011 HRO S3 SRC



REF.	DESCRIPTION	SIZE
62 461 54	Bacou Hulso BTP	35-49



## URBAN EVOLUTION

Honeywell has capitalised on its wide experience in the field of safety to develop ranges using the latest technology, which have as their foundations: Safety - Quality - Comfort. Discover the new generation of traditional URBAN models designed to meet your foot protection needs in specific industrial environments. The development of the Urban range offers comfort and technology with a revamped design that is suitable for work clothing, uniforms and casual wear alike. This range of non-metallic footwear is recommended for industry, logistics and transport, service industries and outdoor work.



### NEW URBAN, STRONG GRIP PU2D (DOUBLE DENSITY) OUTSOLE

- Excellent grip designed for industrial and indoor environments
- Grip coefficients exceed EN 20345:2011 standards

#### BENEFITS:

- Non-slip cleats: Designed for high-performance grip on smooth surfaces
- Fluid expulsion channels: Prevent slipping, instant expulsion of liquids
- Marked heel: Heel shock absorber, perfect stability on every type of surface



### NEW PREMIUM PLUS TOE CAP

- Development of a new high performance toe cap:  
20% additional clearance than required by regulations
- New shape designed for the specific needs of users
- Reinforced resistance to impact and compression for improved performance

#### MAIN BENEFITS:

- Enhanced safety against risks of impact and compression
- Toe cap follows the anatomy of the foot and is designed for specific work environments
- Thermal insulation
- Non-metallic



### EXCLUSIVE XMAX INSOLE FOR URBAN RANGE

- Dual-density structure for extra comfort
- Antibacterial and anti-odor treatment
- Removable for easy maintenance
- Antistatic
- Thermoformed insole to adapt to individual feet
- Evacuation channels: ensure the circulation of air under the foot when walking

#### MAIN BENEFITS:

- Hygiene
- Comfort



**PIONNER BLACK**

**METAL FREE**

S3 CI SRC

Versatile model for industrial and outdoor work

- Water-repellent full-grain leather upper
- Ergonomic padded ankle collar
- Fabric lining
- Double density PU outsole
- Non-metallic toe cap
- Xmax insole
- EN ISO 20345:2011 S3 CI SRC

REF.	DESCRIPTION	SIZE
62 444 13	Pionner Black	35-49



**PIONNER**

**METAL FREE**

S3 CI SRC

Versatile model for industrial and outdoor work

- Water-repellent Nubuck split upper
- Ergonomic padded ankle collar
- Fabric lining
- Double density PU outsole
- Non-metallic toe cap
- Xmax insole
- EN ISO 20345:2011 S3 CI SRC

REF.	DESCRIPTION	SIZE
62 444 11	Pionner	35-49



**REPORTER**

**METAL FREE**

S3 CI SRC

Versatile model for industrial and outdoor work

- Water-repellent full-grain leather upper
- Ergonomic padded ankle collar
- Fabric lining
- Double density PU outsole
- Non-metallic toe cap
- Xmax insole
- EN ISO 20345:2011 S3 CI SRC

REF.	DESCRIPTION	SIZE
62 444 16	Reporter	35-49



### EXPLORER RIPPER

S3 CI SRC

Recommended for use by waste collection companies and local authorities

- Water-resistant oiled leather upper
- Ergonomic ankle collar and reflective Cordura®
- Reinforced protection at the front
- Silver ion and Coolmax® fibre antibacterial fabric lining
- Double density PU outsole
- Non-metallic toe cap
- Xmax insole
- EN ISO 20345:2011 S3 CI SRC

REF.	DESCRIPTION	SIZE
62 444 56	Explorer Ripper	35-49



### FLYER RIPPER

S3 CI SRC

Recommended for use by waste collection companies and local authorities

- Water-resistant oiled leather upper
- Reflective Cordura® trim
- Reinforced protection at the front
- Silver ion and Coolmax® fibre antibacterial fabric lining
- Double density PU outsole
- Non-metallic toe cap
- Xmax insole
- EN ISO 20345:2011 S3 CI SRC

REF.	DESCRIPTION	SIZE
62 444 57	Flyer Ripper	35-49



## **(i)XTREM EVOLUTION**

Honeywell has capitalised on its wide experience in the field of safety to develop ranges using the latest technology, which have as their watchwords: Safety - Quality - Comfort. Discover the new generation of (i) XTREM technical models, designed to meet your foot protection needs in specific industrial environments. The development of the (i)XTREM range combines comfort, performance and durability. The raw materials have been carefully chosen to guarantee optimal protection in hostile and demanding environments. The toe and puncture-resistant non-metallic insert ensures lightness and thermal insulation while the sole injection technology offers flexibility and grip.

This range is recommended for work environments with a high risk of ankle injury, aggressive environments and public utilities (waste management, railways, maintenance, etc.).



### **NEW (i)XTREM, STRONG GRIP PU/NITRILE OUTSOLE**

- Excellent grip on all surfaces, indoor and outdoor
- Grip coefficients exceed EN 20345:2011 standards

#### **BENEFITS:**

- Biomechanical: Forefoot designed for extra grip and propulsion
- Non-slip cleats: Cleats provide enhanced slip-resistance and facilitate fluid expulsion. Specific cleats on the instep for improved grip on ladders
- Marked heel: Heel shock absorber. Heel area designed for grip and support for walking action



### **NEW PREMIUM PLUS TOE CAP**

- Development of a new high performance toe cap: 20% additional clearance than required by regulations
- New shape designed for the specific needs of users
- Reinforced resistance to impact and compression for improved performance

#### **BENEFITS:**

- Enhanced safety against risks of impact and compression
- Toe cap follows the anatomy of the foot and is designed for specific work environments
- Thermal insulation
- Non-metallic



### **INSOLE FOR (i)XTREM RANGE**

- Shock absorption thanks to high-strength foam
- Comfortable
- Antistatic
- Antibacterial
- Excellent water absorption and desorption
- Washable up to 90°C while retaining its properties
- Tear and abrasion resistance
- Breathable



### **ARTICO® 3D “SLIPPER” EFFECT LINING**

- Complies with the new standard EN ISO 20345:2011
- Hydrophilic, breathable, absorbent and fast-drying
- Antibacterial (Thermy-tex) and anti-odour
- Enhanced foot hygiene and ventilation
- High abrasion and tear resistance

**FORCE**

**METAL FREE**

S3 HRO HI CI SRC

Versatile model for heavy industrial and outdoor work

- Water-repellent full-grain leather upper
- Waterproof side gussets
- Artico® 3D lining covering the entire foot
- Ergonomic and padded collar for an optimised comfort
- Reinforced front
- Non-metallic toe cap
- Reflective non-metallic lace holes
- Non-metallic anti-puncture insert
- PU/Nitrile injected outsole
- (i)Xtrem insole
- EN ISO 20345:2011 S3 HRO HI CI SRC



REF.	DESCRIPTION	SIZE
62 462 03	Force	37-48



**PROTECT**

**METAL FREE**

S3 HRO HI CI SRC

Versatile model for heavy industrial and outdoor work

- Water-repellent full-grain leather upper
- Waterproof side gussets
- Artico® 3D lining covering the entire foot
- Ergonomic collar and padded tongue for an optimised comfort
- Reinforced front
- Non-metallic toe cap
- On toe protection assembly
- Reflective non-metallic lace holes
- Non-metallic anti-puncture insert
- PU/Nitrile injected outsole
- (i)Xtrem insole
- EN ISO 20345:2011 S3 HRO HI CI SRC



REF.	DESCRIPTION	SIZE
62 462 04	Protect	37-48





**HIKE**

**METAL FREE**

S3 HRO HI CI SRC

Versatile model for heavy industrial and outdoor work

- Water-repellent full-grain leather upper
- Waterproof side gussets
- Artico® 3D lining covering the entire foot
- Ergonomic collar and padded tongue for an optimised comfort
- Reinforced front
- Non-metallic toe cap
- Non-metallic anti-puncture plate
- PU/Nitrile injected outsole
- (i)Xtrem insole
- EN ISO 20345:2011 S3 HRO HI CI SRC



REF.	DESCRIPTION	SIZE
62 462 01	Hike	35-49



**QUAD**

**METAL FREE**

S3 HRO HI CI SRC

Versatile model for heavy industrial, outdoor work and construction

- Water-repellent full-grain leather upper
- Comfort foam for ankle grip
- Heel loops
- Thermal insulation foot lining
- Reinforced front
- Non-metallic toe cap
- Fast-drying Poromax® 3D lining, thanks to its hydrophilic treatment, develops total absorption properties in damp conditions/has an antibacterial and antimicrobial Thermo-tex treatment
- PU/Nitrile injected outsole
- (i)Xtrem insole
- EN ISO 20345:2011 S3 HRO HI CI SRC



REF.	DESCRIPTION	SIZE
62 462 12	Quad	35-49



**BALLAST EVO**

**METAL FREE**

S3 HRO HI CI SRC

Model particularly suited to working on unstable and “aggressive” ground, including railway ballast

- Metal free: model particularly suited to working on unstable and “aggressive” ground, including railway ballast
- Oily leather upper, water-repellent and oil-repellent treatment, brown color; ergonomic upper in mono birex
- Ergonomic ankle collar in mono birex, side bellows sealing
- Artico® 3D lining covering the entire foot
- Quilted high collar for maximum comfort
- Reinforcement overtop in front without apparent stitching
- Non-metallic anti-puncture insert
- Antibacterial, antistatic and removable insole; excellent water absorption
- Non-metallic toe cap
- PU/Nitrile injected outsole
- (i)Xtrem insole
- EN ISO 20345:2011 S3 HRO HI CI SR



REF.	DESCRIPTION	SIZE
62 455 64	Ballast	35-49

**BALLAST ICE EVO**

**METAL FREE**

S3 HRO HI CI SRC

Model particularly suited to working on unstable ground in cold and “aggressive” environments, including railway ballast

- Metal free: model particularly suited to working on unstable and “aggressive” ground, including railway ballast
- Oily leather upper, water-repellent and oil-repellent treatment, brown color; ergonomic upper in mono birex
- Ergonomic ankle collar in mono birex, side bellows sealing
- Thermal insulation lining covering the entire foot
- Artico® 3D lining covering the entire foot
- Quilted high collar for maximum comfort
- Reinforcement overtop in front without apparent stitching
- Non-metallic anti-puncture insert
- Antibacterial, antistatic and removable insole; excellent water absorption
- Non-metallic toe cap
- PU/Nitrile injected outsole
- (i)Xtrem insole
- EN ISO 20345:2011 S3 HRO HI CI SRC



REF.	DESCRIPTION	SIZE
62 462 17	Ballast Ice	37-48

**COLLECT**

**METAL FREE**

S3 HRO HI CI SRC

Model particularly suited to maintenance work, waste management and local authorities

- Water-repellent full-grain leather upper
- Waterproof side gussets
- Ergonomic collar and padded tongue for an optimised comfort
- Waterproof side seams
- Coolmax® antibacterial lining
- Reinforced front
- Non-metallic toe cap
- Non-metallic anti-puncture insert
- PU/Nitrile injected outsole
- (i)Xtrem insole
- EN ISO 20345:2011 S3 HRO HI CI SRC



REF.	DESCRIPTION	SIZE
62 462 02	Collect	37-48



**COLLECT ICE**

**METAL FREE**

S3 HRO HI CI SRC

Model particularly suited to maintenance work, waste management and local authorities in cold environments

- Water-repellent full-grain leather upper
- Waterproof side gussets
- Ergonomic collar and padded tongue for an optimised comfort
- Waterproof side seams
- Coolmax® antibacterial lining
- Thermal insulation lining
- Reinforced front
- Non-metallic toe cap
- Non-metallic anti-puncture insert
- PU/Nitrile injected outsole
- (i)Xtrem insole
- EN ISO 20345:2011 S3 HRO HI CI SRC



REF.	DESCRIPTION	SIZE
62 462 10	Collect Ice	37-48



## **COCOON: A NEW SAFETY FOOTWEAR EXPERIENCE FOR WOMEN**

Wearing safety shoes is most of the time a bad experience for ladies: heavy, not aesthetic, un-adapted and even sometimes just a men's shoe in a small size. The new Cocoon range of safety footwear has been designed and developed to provide comfort, lightness and performance to ensure lady's satisfaction.

### **SIMPLICITY**

The Cocoon experience starts with the new packaging. Easy to open, it is also includes a quick start guide: advice for proper use and daily maintenance of the shoes.

### **COMFORT**

This new range has been designed specifically to respect women's morphology, ensuring perfect adaptation to the natural movements of the foot. The use of high quality materials ensures immediate comfort as well as long term foot health.

### **LIGHTNESS**

Integrating the best non-metallic safety elements:

- the latest generation of non-metallic toecap. Thin and 50% lighter but still ensuring a strong level of protection.
- FLEXIUM™ non-metallic midsole provides a flexible anti-puncture shield protection of the whole surface of the foot.

### **GRIP**

The new PU-Rubber outsole provides a strong level of grip. The design of the cleats, along with the quality outsole material, improve safety to help prevent slips, trips and falls.

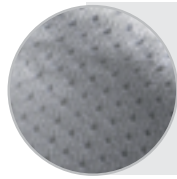
### **DESIGN**

Inspired by fashion trends, the Cocoon range is a fine combination of modernity and traditional shoe making know-how. Wearers can adapt the look of their footwear by opting to use black laces or the lavender coloured laces also supplied with each pair of shoes.





Poromax®  
3D lining<sup>(1)</sup>



(1) Poromax®:

- Due to its hydrophilic treatment, acquires full moisture absorption properties
- Antibacterial and antimicrobial due to the Thermy-tex treatment

Delivered with  
two pairs of laces  
(black or lavender  
color)



Full grain water-  
repellent leather

Double  
density insole

FLEXIUM™ non metallic  
antipuncture midsole

Non-metallic  
toecap

New PU-Rubber outsole

- Large surface in contact with the ground for an improved grip
- Cleats designed for water evacuation
- Strong abrasion resistance
- Sizes: 35-42



**COSY BLACK**

S3 HI CI SRC

- Water-resistant leather upper
- Ergonomic padded ankle collar
- Poromax® 3D lining
- Delivered with two pairs of laces
- Flexibility and comfort
- Ideal for humid environments
- EN ISO 20345:2011 S3 HI CI SRC

**METAL FREE**



REF.	DESCRIPTION	SIZE
65 516 01	Cosy Black	35-42

**COSY GREY**

S3 HI CI SRC

- Water-resistant microfiber upper
- Ergonomic padded ankle collar
- Poromax® 3D lining
- Delivered with two pairs of laces
- Flexibility and comfort
- Ideal for humid environments
- EN ISO 20345:2011 S3 HI CI SRC

**METAL FREE**



REF.	DESCRIPTION	SIZE
65 516 02	Cosy Grey	35-42

**COSY MID**

S3 HI CI SRC

- Water-resistant leather upper
- Ergonomic padded ankle collar
- Poromax® 3D lining
- Delivered with two pairs of laces
- Excellent ankle support
- Ideal for humid environments
- EN ISO 20345:2011 S3 HI CI SRC

**METAL FREE**



REF.	DESCRIPTION	SIZE
65 516 03	Cosy Mid	35-42

**GLEE**

S3 HI CI SRC

- Water-resistant textile and microfiber upper
- Ergonomic padded ankle collar
- Poromax® 3D lining
- Delivered with two pairs of laces
- Flexibility and comfort
- Ideal for humid environments
- EN ISO 20345:2011 S3 HI CI SRC

**METAL FREE**



REF.	DESCRIPTION	SIZE
65 516 04	Glee	35-42

**SPICE**

S1P HI CI SRC

- Ventilated mesh upper
- Ergonomic padded ankle collar
- Poromax® 3D lining
- Delivered with two pairs of laces
- Flexibility and comfort
- Ideal for dry environments
- EN ISO 20345:2011 S1P HI CI SRC

**METAL FREE**



REF.	DESCRIPTION	SIZE
65 516 07	Spice	35-42

**SWEET**

S1P HI CI SRC

- Ventilated mesh upper
- Ergonomic padded ankle collar
- Poromax® 3D lining
- Delivered with two pairs of laces
- Flexibility and comfort
- Ideal for dry environments
- EN ISO 20345:2011 S1P HI CI SRC

**METAL FREE**



REF.	DESCRIPTION	SIZE
65 516 08	Sweet	35-42


**COSY BLACK ESD**

S3 HI CI SRC

**METAL FREE**

- Water-resistant leather upper
- Ergonomic padded ankle collar
- Poromax® 3D lining
- Delivered with two pairs of laces
- Flexibility and comfort
- Ideal for humid environments
- Specific ESD Insole EN 61340-5-1:2007
- EN ISO 20345:2011 S3 HI CI SRC



REF.	DESCRIPTION	SIZE
 65 516 09	Cosy Black ESD	35-42





## TEMPTATION® CITY - LADIES SAFETY FOOTWEAR

The Temptation City collection consists of smart models, combining soft materials (leather or suede) with optimal protection:

- Temptation City outsole: thin, light and flexible, slip-resistant on all types of surface
- Leather lining for improved hygiene and greater comfort
- 200 Joules steel toecap

With classic colours, these shoes will look good with all types of dress code

### BACOU SUCCESS

#### S2 SRC

- Black water-resistant full grain leather shoe
- Padded and ergonomic collar
- Flexibility and comfort
- Ideal for humid environments
- EN ISO 20345:2011 S2 SRC

REF.	DESCRIPTION	SIZE
65 511 25	Bacou Success	35-42



### BACOU SUCCESS

#### S3 SRC

- Same model with FLEXIUM™ anti-puncture midsole.
- EN ISO 20345:2011 S3 SRC

REF.	DESCRIPTION	SIZE
65 511 26	Bacou Success	35-42



### BACOU TOP

#### S3 SRC

- Black water-resistant full grain leather ankle boot
- Ergonomic ankle collar
- Excellent ankle support
- Ideal for humid environments
- FLEXIUM™ anti-puncture midsole
- EN ISO 20345:2011 S3 SRC

REF.	DESCRIPTION	SIZE
65 511 31	Bacou Top	35-42



### BACOU EASY

S2 SRC

- Loafer in navy blue water-resistant leather
- Quick and easy to put on/take off
- Ideal for damp environments
- EN ISO 20345:2011 S2 SRC

REF.	DESCRIPTION	SIZE
65 511 40	Bacou Easy	35-42



### BACOU IMAGE

S2 SRC

- Black full grain leather shoe with buckle fastening
- Padded and ergonomic collar
- Suitable for wearing with uniform
- Ideal for humid environments
- EN ISO 20345:2011 S2 SRC

REF.	DESCRIPTION	SIZE
65 511 35	Bacou Image	35-42



### BACOU FINE

S1 SRC

- Black suede leather moccasin
- Quick and easy to put on/take off
- Ideal for dry environments
- EN ISO 20345:2011 S1 SRC

REF.	DESCRIPTION	SIZE
65 511 55	Bacou Fine	35-42



## EXECUTIVE

### LIGHTNESS, COMFORT AND STYLE

Developed with traditional shoe making knowledge, the executive range is built on a new last, dedicated to a modern and elegant style. Non-metallic safety elements ensure lightness and protection. The most elegant safety footwear...



#### SMOOTH FULL GRAIN LEATHER UPPERS

- Supple and resistant



#### MICROFIBER INSOLE

- Comfort and breathability



#### FULLY LINED WITH LEATHER

- Optimal comfort and evacuation of perspiration



#### NEW EXECUTIVE OUTSOLE

- Lightweight and flexible with SRC slip resistance properties



#### DELIVERED WITH TWO PAIRS OF LACES

- Black for discretion, colored for style



#### SMARTIUM 200J NON-METALLIC TOECAP

- Non magnetic, protects from cold or warm environments

### ELEGIO

#### S3 CI SRC

- Black Oxford shoe
- Smooth full grain leather upper
- Fully lined in leather
- Ideal for wear with uniforms
- EN ISO 20345:2011 S3 CI SRC

**METAL FREE**



REF.	DESCRIPTION	SIZE
65 430 16	Elegio	38-48



### ERRO

#### S3 CI SRC

- Black brogue shoe
- Smooth full grain leather upper
- Fully lined in leather
- Ideal for wear with uniforms
- EN ISO 20345:2011 S3 CI SRC

**METAL FREE**



REF.	DESCRIPTION	SIZE
65 430 10	Erro	38-48



## EXCEPTIO

S3 CI SRC

- Black Chelsea boot
- Smooth full grain leather upper
- Back loop, to make it easier to pull on and take off
- Fully lined in leather
- Ideal for wear with uniforms
- EN ISO 20345:2011 S3 CI SRC

**METAL FREE**



REF.	DESCRIPTION	SIZE
65 430 12	Exceptio	38-48



## ELIPSE

S1P CI SRC

- Derby-style boot
- Microfiber upper
- Padded ankle collar
- No lining for an improved lightness
- Ideal for wear with uniforms and suitable for drivers
- EN ISO 20345:2011 S1P SRC

**METAL FREE**



REF.	DESCRIPTION	SIZE
65 430 20	Elipse	38-48





## **OIL & GAS - ENERGY RANGE**

This range is dedicated to aggressive environments (heavy chemical industries, metallurgy, offshore and refineries) providing comfort, performance and durability. The premium raw materials have been selected to guarantee the best protection in harsh and tough environments, the non-metallic toe cap and anti puncture midsole insure lightness and thermal insulation while the injected outsole brings flexibility and slip resistance on any surface. New generation of oil & gas products: no compromise between comfort, performance and durability!



### **SPECIFIC PATTERNS AND DESIGNS:**

- Quick and easy fluids evacuation
- Durability with reinforced stitching
- No additional stitching on quarter to provide strong abrasion resistance



### **SPECIFIC FOCUS ON COMFORT:**

- Padded and ergonomic collar
- 3D lining providing thermal insulation
- Technical insole removable, ergonomic, antistatic and anti bacteria



### **INTEGRATION OF A LATERAL ZIPPER:**

- Quick step in and out
- Water bellows for improved protection against fluids penetration



### **PERFORMANCE IN TOUGH AND HARSH ENVIRONMENTS:**

- Exclusive injected PU2D outsole combining lightweight, excellent choc absorption, abrasion and slip resistance on any surface
- New (i)XTREM, hi-grip PU/Nitrile outsole combining excellent grip on all surfaces indoor and outdoor, grip coefficients exceed EN 20345:2011 standard requirements, non-slip cleats, prominent heel



**SYNERGIC**

**BACOU FREE**

S3 CI HI SRC

- Water resistant full grain leather upper
- Poromax® 3D lining: breathable, absorbent, fast drying
- Padded and ergonomic collar
- PU coated microfiber scuff cap
- Reflective piping at the heel
- Specific patterns for improved fluids evacuation
- PU2D Injected outsole
- EN ISO 20345:2011



REF.	DESCRIPTION	SIZE
62 462 20	Synergic	35-49



**ENERGIC**

**BACOU FREE**

S3 CI HI SRC

- Water resistant full grain leather upper
- Poromax® 3D lining : breathable, absorbent, fast drying
- Padded and ergonomic collar
- PU coated microfiber scuff cap
- Lace and lateral zipper with watertight bellows
- Specific patterns for improved fluids evacuation
- PU2D Injected outsole
- EN ISO 20345:2011



REF.	DESCRIPTION	SIZE
62 462 21	Energic	35-49



**XPLORE**

**(I)XTREM Evolution**

S3 HRO HI CI SRC

- Water-repellent full grain leather resistant to hydrocarbon splashes
- Poromax® 3D lining: breathable, absorbent and fast-drying
- Padded and ergonomic collar
- Reinforced toe cap
- Non-metallic toe cap
- PU/Nitrile injected outsole
- Xmax insole
- Reflective lace and lateral zipper with watertight bellows
- Specific patterns for improved fluids evacuation
- EN ISO 20345:2011 S3 HRO HI CI SRC



REF.	DESCRIPTION	SIZE
62 462 22	Xplore	37-48





### **BAC'RUN® PUN**

- PU/Nitrile outsole BAC'RUN® POLYNIT™ composed of a layer in nitrile. in contact with the ground and a PU comfort layer.
- Resistant to heat by contact up to 300°C.
- Ideal for long periods of work on either hot, or cold/frozen ground.



### **SPACIUM™ 200J NON-METALLIC TOE CAP**

- Metal free and unalterable
- Protects from hot and cold
- Effective protection and imperceptible to the wearer



### **WATER-RESISTANT LEATHER**

- Resistant to fluid splashes and tearing
- Long life span



### **POROMAX® 3D LINING (DEPENDING ON THE MODEL)**

- Due to its hydrophilic treatment, acquires full moisture absorption properties antimicrobial thanks to the Thermo-tex treatment



### **PADDED ERGONOMIC ANKLE COLLAR AND TONGUE**

- Ankle and instep protection



### **BAC'RUN INSOLE® PU, NITRILE**

- Removable, antistatic and antibacterial
- Improved hygiene
- Greater comfort



**BACOU EXONO**

**METAL FREE - CHEMICAL SPECIFIC**

S3 HRO SRC

- Microfibre upper
- Poromax® 3D lining: breathable, absorbent and quick drying
- Resistant to contact with corrosive fluids and acids in low concentration
- EN ISO 20345:2011 S3 HRO SRC

REF.	DESCRIPTION	SIZE
62 458 58	Bacou Exono	38-48



**BACOU ARGONO**

**METAL FREE - WELDING SPECIFIC**

S3 HRO SRC

- Water-resistant full grain leather upper, Nomex® non-flammable stitching
- Padded, leather lined spark-proof flap
- Poromax® 3D lining: breathable, absorbent and quick drying
- Easy to put on/take off
- EN ISO 20345:2011 S3 HRO SRC

REF.	DESCRIPTION	SIZE
62 458 68	Bacou Argono	38-48



**BACOU BAC'RUN® PROTECTOR**

**METATARSAL PROTECTION**

S3 M HRO SRC

- Water-resistant leather upper
- Reinforced protection over the toecap
- Absorbent textile lining
- Quick release buckle fastening
- Flexible 100J metatarsal protection (M)
- EN ISO 20345:2011 S3 M HRO SRC

REF.	DESCRIPTION	SIZE
62 458 77	Bacou Bac'Run® Protector	38-48



**BACOU FREEROAD**

S3 HRO SRC

- Water-resistant leather
- Poromax® 3D lining: breathable, absorbent and quick drying
- Specific sole concept for heat insulation and walking on warm grounds
- Specific for road manufacturing
- EN ISO 20345:2011 S3 HRO HI SRC

REF.	DESCRIPTION	SIZE
62 458 67	Bacou Freeroad	38-48





## **NIT'LITE®: SHOES THAT WITHSTAND EXTREME TEMPERATURES**

With the NIT'LITE range®, the teams have created the first nitrile rubber shoe sole with an expanded cellular structure, for greater lightness and comfort.

The nitrile sole offers excellent resistance to extreme temperatures (up to 300°C), to fuel and hydrolysis.

The comfort is unmatched thanks to the lightness and elasticity offered by NIT'LITE®.





**BACOU HORALO**

**SPECIFIC FOR FOUNDRY/WELDING**

S1P HRO SRC

- Black pigmented leather upper
- Padding for ankle protection
- Leather flap fastening, spark guard with 2 quick-release buckles
- Quick and easy to remove in the event of risk of burning
- Outsole resistance up to 300°C
- EN ISO 20345:2011 S1P HRO SRC

REF.	DESCRIPTION	SIZE
62 134 03	Bacou Horalo	38-47



**BACOU SUPER BOOT BK**

S1P HRO SRC

- Black pigmented leather upper
- Padded ankle collar for ankle protection
- With anti-puncture midsole
- Outsole resistance up to 300°C
- EN ISO 20345:2011 S1P HRO SRC

REF.	DESCRIPTION	SIZE
62 133 03	Bacou Super Boot BK	38-47



**BACOU NTL MAXI BOOT**

S3 HRO SRC

- Pigmented water-resistant leather upper
- All leather ankle protection
- Resistant to fluid spillages
- Outsole resistance up to 300°C
- EN ISO 20345:2011 S3 HRO SRC

REF.	DESCRIPTION	SIZE
62 135 03	Bacou NTL Maxi Boot	38-47



### **BACOU TRAINING LUX**

S3 HRO SRC

- Water-resistant black full grain leather upper
- Ideal for chemical industry and assembly work
- EN ISO 20345:2011 S3 HRO SRC

REF.	DESCRIPTION	SIZE
62 137 03	Bacou Training Lux	38-47



### **BACOU RIGGER**

S3 HRO SRC

- Water-resistant full grain leather boot
- Stitching resistant to heat and fire
- Pull-on lugs
- Ideal for the metal industry
- Resistant to fluid spillages
- EN ISO 20345:2011 S3 HRO SRC

REF.	DESCRIPTION	SIZE
62 139 53	Bacou Rigger	38-47





## WHITE RANGE: HYGIENE, COMFORT AND GRIP

Honeywell teams have created a range dedicated to the needs of the food industry, catering and advanced technology. All models in the white range are manufactured with materials that resist to diluted chemicals and fatty substances. The design of the upper has been studied in order to restrict the proliferation of bacterial outbreaks and facilitate the evacuation of fluids.

### BACOU PRO CLEAN

S2 SRC

- White microfibre upper for easy cleaning
- No stitching on the forefoot to minimize sources of contamination
- White & grey Bacou Original sole
- High slip resistance and durability for intensive usage
- EN ISO 20345:2011 S2 SRC

REF.	DESCRIPTION	SIZE
62 461 27	Bacou Pro Clean	39-49

**METAL FREE**



### BACOU PRO CLEAN BLACK

S2 SRC

- Black microfibre upper for easy cleaning
- No stitching on the forefoot to minimize sources of contamination
- Bacou Original black sole
- High slip resistance and durability for intensive usage
- EN ISO 20345:2011 S2 SRC

REF.	DESCRIPTION	SIZE
62 461 30	Bacou Pro Clean Black	39-48

**METAL FREE**



### BACOU SUPER PRO CLEAN

S2 SRC

- White microfibre upper for easy cleaning
- No stitching on the forefoot to minimize sources of contamination
- White & grey Bacou Original sole
- Ensures good foot support
- EN ISO 20345:2011 S2 SRC

REF.	DESCRIPTION	SIZE
62 461 29	Bacou Super Pro Clean	39-48

**METAL FREE**



**BACOU MONT BLANC**

S3 SRC

- White leather upper with antibacterial treatment
- No stitching on the forefoot to minimize sources of contamination
- Lightness and flexibility
- EN ISO 20345:2011 S3 SRC

REF.	DESCRIPTION	SIZE
62 332 15	Bacou Mont Blanc	35-47



**BACOU MONT BLANC**

S2 SRC

- Same model without anti-puncture midsole
- EN ISO 20345:2011 S2 SRC

REF.	DESCRIPTION	SIZE
62 332 16	Bacou Mont Blanc	35-47



**BACOU SUPER MONT BLANC**

S2 SRC

- Antibacterial white leather upper
- No stitching on the forefoot to minimize sources of contamination
- Lightness and flexibility
- EN ISO 20345:2011 S2 SRC

REF.	DESCRIPTION	SIZE
62 407 48	Bacou Super Mont Blanc	35-47



**SAFETY FOOTWEAR**  
**WHITE RANGE > Ladies**

**BACOU LITE**

S1 SRC

- Perforated grain leather upper, with leather lining
- PU sole
- Ideal in warm and dry environments
- EN ISO 20345:2011 S1 SRC

REF.	DESCRIPTION	SIZE
65 511 50	Bacou Lite	35-42



### **STITCHED AND CEMENTED RANGES: STRENGTH, EXPERTISE AND VARIETY OF CHOICE**

The stitched and cemented collections offer a variety of choices both technologically and aesthetically. Stitched outsole assembly is recommended for the manufacture of sturdy and durable footwear, to be worn in all weather conditions, and designed for outdoor activities and harsh environments. It is used for making footwear with an advanced, practical and fashionable outdoor design.

Most of the stitched models incorporate the latest innovations in professional footwear:

- 200J non-metallic toecap
- Anti-puncture non-metallic midsole

They provide the user with greater comfort and safety all day long.



### **DOUBLE STITCHED ASSEMBLY TECHNOLOGY**



The double stitched assembly manufacturing process provides wearers with the guarantee of a durable and comfortable shoe that adapts to any terrain and all weather conditions.

It provides improved foot hygiene through evacuation of perspiration.



The stitched and cemented models provide an answer to specific needs:

- Outdoor activities in difficult weather conditions
- Managerial staff
- Exclusive models for fire fighters



**BACOU ANNAPURNA**

S3 HRO SRC

- Water-resistant full grain upper
- Suede lining and cushioned ankle collar
- Ideal for use in humid environments and on unstable ground
- EN ISO 20345:2011 S3 HRO SRC

REF.	DESCRIPTION	SIZE
65 303 16	Bacou Annapurna	39-47



**BACOU NEBRASKA**

S3 HRO SRC

- Water-resistant black oiled leather upper
- Padded ankle collar and bellows
- Anti-abrasion toecap and rear reinforcement
- Ideal for humid environments
- EN ISO 20345:2011 S3 HRO SRC

REF.	DESCRIPTION	SIZE
65 303 31	Bacou Nebraska	39-47



**BACOU MONTANA**

S3 HRO CI SRC

**METAL FREE**

- Water-resistant oiled grain leather upper
- Fleece lined 75% woo.
- Black Nitrile outsole
- Ideal for cold conditions and winter work
- EN ISO 20345:2011 S3 HRO CI SRC

REF.	DESCRIPTION	SIZE
65 390 60	Bacou Montana	37-48



## PROFESSIONAL FOOTWEAR FOR FIREFIGHTERS

### SWIFT AND AGILE IN THE HEAT OF THE ACTION

Honeywell has developed a new range of technical footwear specially designed to meet the needs of firefighters' during rescue and emergency work. By working with professional firefighters in their working environment, Honeywell has identified priority needs and working constraints and has developed a technical solution which meets their need for light, flexible and durable products (footwear) that react quickly in all situations.



**Watch Video**

#### Padded ergonomic collar and tongue

- Comfort and protection in all positions

#### Heel loop

- For easy fitting

#### Insole

- Removable
- Ergonomic
- Antibacterial
- Antistatic

#### Anti-puncture steel plate

- Optimum protection from risk of puncture by sharp and blunt objects

#### Polyurethane comfort layer

- Radiant heat resistant
- Resistant to hydrocarbons and acids at low concentration
- Very good shock absorption

#### SYMPATEX® Moisture Tech membrane

- Resists to liquid penetration
- Optimum perspiration treatment
- Fast-drying

#### Flame resistant laces Central zipper

- For easy fitting
- Fast removal

#### Premium full grain leather

- Flame resistant
- Water-repellent
- Oil-repellent
- Abrasion resistant

#### Innovative over-cap, with no visible seams

- Increased abrasion resistance
- Flame resistant
- Resistant to fluids

#### 200J Non-metallic toe cap (F2A) or flexible 500 N (F1PA) soft toe

- Lightweight
- Thermal insulating
- Non-magnetic
- Protection against shocks and pressure

#### Nitrile Hi3 outsole

- Abrasion resistant
- Slip-resistant on all types of floors
- Resistant to hydrocarbons
- Heat resistant up to 300° C

#### NORM EN15090

Honeywell reminds you the meaning of the following pictograms on the upper portion of its boots and rangers (hot stamping):



#### F1PA:

**F** Compliant with all general requirements of the EN 15090 standard

**1 Type 1 - Model made from leather and other materials**

Suitable for station-based activities, general rescue operations and for extinguishing fires of plant-based combustibles.

**P** Puncture resistance

**A** Antistatic properties



#### F2A:

**F** Compliant with all general requirements of the EN 15090 standard

**2 Type 2 - Model made from leather and other materials**

Suitable for all fire rescue operations, extinguishing fires and preserving property in buildings, walled structures, vehicles, vessels, or other property affected by fire or an emergency situation

**A** Antistatic properties

### **FIREPRO F2A**

HI3 CI SRC

**TYPE II - CATEGORY F2A**

**Recommended use:** Extinguishing structural fires, Fire rescue operations, Preservation of property in fire or emergency situations, Prolonged use in the presence of fluids and in wet environments

- Membrane impermeable SYMPATEX® Moisture Tech
- Padded and ergonomic collar for improved comfort in any position

REF.	DESCRIPTION	SIZE
62 462 80	Firepro F2A	38-48



### **FIRESTORM F2A**

HI3 CI SRC

**TYPE II - CATEGORY F2A**

**Recommended use:** Extinguishing structural fires, Fire rescue operations, Preservation of property in fire or emergency situations, Prolonged use in the presence of fluids and in wet environments

- Waterproof and breathable SYMPATEX® Moisture Tech membrane
- Easy fitting laces

REF.	DESCRIPTION	SIZE
62 462 81	Firestorm F2A	38-48



### **FIREFAST F2A**

HI3 CI SRC

**TYPE II - CATEGORY F2A**

**Recommended use:** Fire rescue operations, Relief operations, Extinguishing structural and vehicle fires, Preservation of property in fire and emergency situations

- 3D technical and innovative lining (Eucalyptus treated)
- Innovative materials

REF.	DESCRIPTION	SIZE
62 462 82	Firefast F2A	38-48



### **FIRETRAIL F1PA**

HI3 CI SRC

**TYPE I - CATEGORY F1PA**

**Recommended use:** General rescue operations on particularly steep environments, Station-based activities, Extinguishing of fires of plant-based combustibles

- Soft toe resistant to 500N, non-metallic, flexible and light
- 3D technical and innovative lining (Eucalyptus treated)

REF.	DESCRIPTION	SIZE
62 462 83	Firetrail F1PA	38-48



## MAXIMUM COMFORT

Our range of accessories meets the needs of the most demanding customers: insoles, socks and over-socks, and laces available in individual packaging.

### ULTIMATE NARROW INSOLE

- Dual density PU foam for intensive use
- Antistatic and ergonomic
- Absorbs perspiration
- Use for tighter fit to suit narrow feet

REF.	DESCRIPTION	SIZE
62 461 99	Ultimate narrow insole	35-47



Certified with the Ultimate Footwear range

### ULTIMATE WIDE INSOLE

- Dual density PU foam for intensive use
- Antistatic and ergonomic
- Absorbs perspiration
- Use to create more room for the comfort of users with wider feet

REF.	DESCRIPTION	SIZE
62 462 00	Ultimate wide insole	35-47



Certified with the Ultimate Footwear range

### BACOU BAC'RUN INSOLE

- Mono-density PU foam
- Antistatic and ergonomic
- Absorbs perspiration

REF.	DESCRIPTION	SIZE
60 003 21	Bacou BAC'RUN insole	35-47



Certified with the following ranges: Bac'Run® PUN, Bacou original ranges

### BACOU X'MAX BLACK INSOLE

- Dual density PU foam for intensive use
- Antibacterial: easy maintenance
- Antistatic in the body: maximum efficiency
- Comfort cushion under the heel: prevents injury and muscle fatigue
- Evacuation channels: ensure the circulation of air under the foot when walking

REF.	DESCRIPTION	SIZE
60 003 50	Bacou X'Max Black insole	35-49

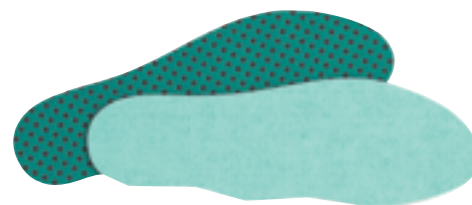


Certified with the following ranges: Bacou Free New generation, Oil & Gas Energy, Urban ranges

**BACOU IMAGE INSOLE**

- Pale green non-woven fibres
- Honeycomb structure, non-allergenic
- Impregnated with an active anti-fungal and antibacterial element
- Reduces the breakdown of perspiration
- Protects against the major germs

REF.	DESCRIPTION	SIZE
60 003 01	Bacou Image insole	35-47

**BACOU FRESH INSOLE**

- Blue non-woven fibres
- Linear structure
- Fine and perforated: promotes air circulation inside the shoe
- Impregnated with an active anti-fungal and antibacterial element
- Reduces the breakdown of perspiration
- Protects against the major germs

REF.	DESCRIPTION	SIZE
60 003 10	Bacou Fresh insole	38-47

**BACOU LACES**

- A wide range of laces, to meet all needs
- Box of 25 pairs



REF.	MATERIAL	COLOUR	75 CM	90 CM	115 CM	120 CM	150 CM
60 006 04	Leather	Black			X		
60 006 01	Polyamide	Black	X				
60 006 07	Polyamide	Black		X			
60 006 08	Polyamide	Black				X	
60 006 09	Polyamide	Black					X
60 006 02	Polyamide	Grey		X			

**BACOU THERMAL OVERSOCKS**

- Warm acrylic fibres on polyester jersey
- Protects the foot and lower leg from cold
- Ideal in cold and wet work environments

REF.	DESCRIPTION	SIZE
60 004 01	Bacou Thermal Oversocks	35-47





## OTTER® ACTIVE

### ALWAYS A SAFE STEP AHEAD

We have listened to you and your workers! The new OTTER® Active range is so amazing. Innovative technologies and materials provide high comfort and safety.

### MORE THAN SAFETY FOOTWEAR

Are you looking for the perfect solution to avoid slipping, tripping and falling? You should really opt for the new OTTER® Active safety shoes. Combining comfort and safety, this lightweight footwear is a perfect companion throughout the day.

#### • Outstanding performance. High productivity

OTTER® Active shoes increase your comfort with a modular insole system which can modify the space inside the shoe, to suit the width of your foot. This insole system is available in three sizes. These shoes will improve your productivity through comfort by optimal damping and ergonomic pivot points for a safe, faster and more flexible course of movements. Excellent breathability adds the final touch to maintain a healthy foot environment.

### THIS FITTING SYSTEM WILL CHANGE YOUR WEARING COMFORT

#### • Fits every shape of foot

The modular insole system customizes the inside the shoe so that it fits the foot perfectly. The perfect fit optimizes both wearing comfort and safety. You don't feel the shoe just the safe foothold and unrestricted mobility.



#### Insoles Certified for all safety shoes starting with article number 75-.

- Open cell foams offering high breathability
- Excellent moisture absorption to provide a dry and better shoe climate
- Long-term cushion comfort and high durability
- Completely washable at 30 °C
- Keeps its properties even after washing
- High conductivity and is ESD approved
- Sizes: 37-48



This is only a selection of applications, there are many more. Please note that requirements vary depending on the fields of application that need to be determined by hazard analysis. If there are questions or you did not find your application, contact us. We would be happy to help you.

**75561-524**

**METAL FREE**

S3 SRC

- Upper material of high-quality pull-up cowhide leather
- Premium textile lining
- PU/TPU sole
- TPU scuff cap
- Insole 75011\*
- Textile anti-perforation midsole
- EN ISO 20345 S3 SRC

REF.	SIZE
75561-524	37-48



**75511-524**

**METAL FREE**

S3 SRC

- Upper material of high-quality pull-up cowhide leather
- Premium textile lining
- PU/TPU sole
- TPU scuff cap
- Insole 75011\*
- Textile anti-perforation midsole
- EN ISO 20345 S3 SRC

REF.	SIZE
75511-524	37-48



**75515-524**

**METAL FREE**

S1P SRC

- Upper material of high-quality pull-up cowhide leather
- Premium textile lining
- PU/TPU sole
- TPU scuff cap
- Insole 75011\*
- Textile anti-perforation midsole
- EN ISO 20345 S1P SRC

REF.	SIZE
75515-524	37-48



**75361-517**

**METAL-FREE AND LEATHER-FREE**

S3 SRC

- Upper material of high-quality microfaser
- Textile lining
- PU/TPU sole
- PU-coated textile material to protect the front
- Insole 75011\*
- Textile anti-perforation midsole
- EN ISO 20345 S3 SRC

REF.	SIZE
75361-517	37-48



**75311-517**

**METAL-FREE AND LEATHER-FREE**

S3 SRC

- Upper material of high-quality microfaser
- Textile lining
- PU/TPU sole
- PU-coated textile material to protect the front
- Insole 75011\*
- Textile anti-perforation midsole
- EN ISO 20345 S3 SRC

REF.	SIZE
75311-517	37-48



**75315-517**

**METAL-FREE AND LEATHER-FREE**

S1P SRC

- Upper material of high-quality microfaser
- Textile lining
- PU/TPU sole
- PU-coated textile material to protect the front
- Insole 75011\*
- Textile anti-perforation midsole
- EN ISO 20345 S1P SRC

REF.	SIZE
75315-517	37-48



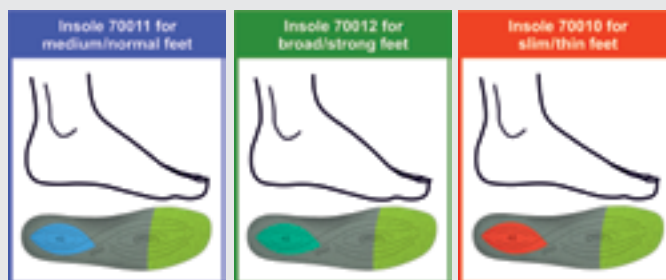
**PREMIUM PROTECT**





### ORTHOLITE® MODULAR INSOLE FITTING SYSTEM

Possibility to modify the volume inside the shoe in 3 steps supports the individual adaption to ones feet for a perfect fit optimizes the wearing comfort and acceptance



Standard insole:  
all articles will be delivered  
with this insole

Insoles for individual adaption  
can be ordered as accessory

### 71001-307

S3 HRO CR SRC

- Upper material high quality pull up leather
- Premium textile lining
- PU/Nitrile sole
- Steel antipuncture midsole
- Width 11
- EN ISO 20345 S3 HRO CR SRC

REF.	SIZE
 71001-307	36-48



### 71051-307

S3 HRO CR SRC

- Upper material high quality pull up leather
- Premium textile lining
- PU/Nitrile sole
- Steel antipuncture midsole
- Width 11
- EN ISO 20345 S3 HRO CR SRC

REF.	SIZE
 71051-307	36-48



All models of Premium Protect range will be delivered with insole 70011 as standard. Insoles 70010 and 70012 are available as accessories on request.

### 71003-326

#### S2 HRO SRC

- Upper material nubuck leather and S2 compliant textile
- Premium textile lining
- PU/Nitrile sole
- Width 11
- EN ISO 20345 S2 HRO SRC

REF.	SIZE
 <b>71003-326</b>	36-48



### 71053-326

#### S2 HRO SRC

- Upper material nubuck leather and S2 compliant textile
- Premium textile lining
- PU/Nitrile sole
- Width 11
- EN ISO 20345 S2 HRO SRC

REF.	SIZE
 <b>71053-326</b>	36-48



### 71005-342

#### S1 HRO SRC

- Upper material nubuck
- Premium textile lining
- PU/Nitrile sole
- Width 11
- EN ISO 20345 S1 HRO SRC

REF.	SIZE
 <b>71005-342</b>	36-48



All models of Premium Protect range will be delivered with insole 70011 as standard. Insoles 70010 and 70012 are available as accessories on request.

**71062-378**

S2 HRO SRC

- Upper material nubuck leather and S2 compliant Cordura® fabric
- Premium textile lining
- PU/Nitrile sole
- Width 11
- EN ISO 20345 S2 HRO SRC

REF.	SIZE
 <b>71062-378</b>	36-48



**71012-378**

S2 HRO SRC

- Upper material nubuck leather and S2 compliant Cordura® fabric
- Premium textile lining
- PU/Nitrile sole
- Width 11
- EN ISO 20345 S2 HRO SRC

REF.	SIZE
 <b>71012-378</b>	36-48



All models of Premium Protect range will be delivered with insole 70011 as standard. Insoles 70010 and 70012 are available as accessories on request.

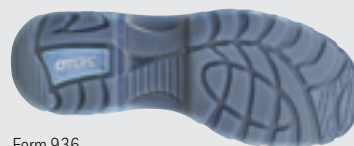
## PREMIUM MFUS®

### SPECIAL BENEFITS:

The patented OTTER MFUS® works as a “metatarsal bandage”. It is based on a textile band which is wrapped around the foot. The band, which is sewn securely at one end to the insole, is wrapped under the foot and then fastened at the other end through a special lacing system.



### DURABLE HIGH FLEXIBLE PU/TPU OUTSOLE, SRC CERTIFIED



Form 936



Form 984/986/988

ALL MODELS  
S1, S2 + S3  
ESD CERTIFIED  
ACCORDING  
61340-5-1



### 98528-770

S1 SRC

- Upper material nubuck leather
- Premium textile lining
- PU/TPU sole
- Width: flexible up to 11
- MFUS® -System
- EN ISO 20345 S1 SRC

REF.	SIZE
98528-770	38-48



**93645-778**

**S3 SRC**

- Upper material nubuck leather and S2 textile
- Premium textile lining
- PU/TPU sole
- Width: flexible up to 12
- MFUS® - System
- EN ISO 20345 S3 SRC

**Available in S2: 93620-778**

REF.	SIZE
 93645-778	38-49



**98414-577**

**S2 SRC**

- Upper material S2 compliant Cordura® fabric
- Premium textile lining
- PU/TPU sole
- MFUS® - System
- Size: 35-37 width flexible up to 9
- Size: 38-48 width flexible up to 11. EN ISO 20345 S2 SRC

REF.	SIZE
 98528-770	35-48



**93695-778**

**S3 SRC**

- Upper material nubuck leather and S2 textile
- Premium textile lining
- PU/TPU sole
- Width: flexible up to 12
- MFUS® - System
- EN ISO 20345 S3 SRC

**Available in S2: 93670-778**

REF.	SIZE
 93695-778	38-49





**PREMIUM CORDURA® FABRIC**



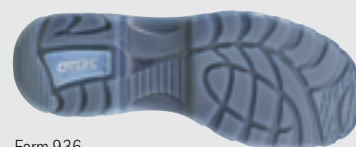
**SPECIAL BENEFITS:**

Cordura® fabric, high durability S2 upper material, 60 min. water resistant, very breathable, significant weight reduction compared to leather.

**S2 MODELS ESD  
 CERTIFIED  
 ACCORDING  
 61340-5-1**



**DURABLE HIGH FLEXIBLE  
 PU/TPU OUTSOLE, SRC  
 CERTIFIED**



Form 936



Form 984/986/988

**98432-577**

S3 SRC

- Upper material S2 compliant Cordura® fabric
- Premium textile lining
- PU/TPU sole
- Width: 9 (35-37), Width 11 (38-48)
- EN ISO 20345 S3 SRC

**Available in S2 ESD version: 98412-577**



REF.	SIZE
98432-577	35-48



**98482-577**

S3 SRC

- Upper material S2 compliant Cordura® fabric
- Premium textile lining
- PU/TPU sole
- Width: 9 (35-37), Width 11 (38-48)
- EN ISO 20345 S3 SRC

**Available in S2 ESD version: 98462-577**

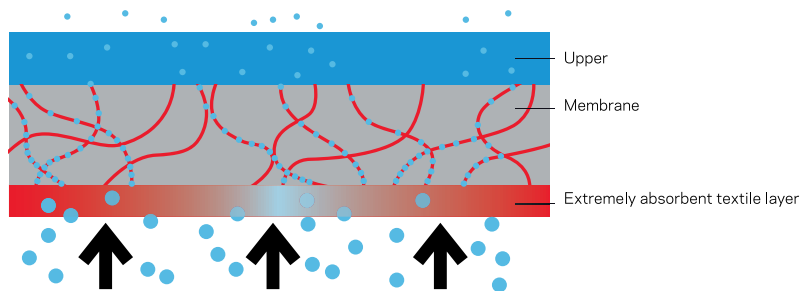


REF.	SIZE
98482-577	35-48



**PREMIUM SYMPATEX®**

**SYMPATEX® HigH<sub>2</sub>Out®**



**ADVANTAGES OF SYMPATEX® HigH<sub>2</sub>Out®**

- Natural foot temperature control.
- In the warmth of activity perspiration is absorbed and evaporated.
- Pleasant cooling effect.
- No perspiration is left on the skin to chill resting feet.
- A comfortable skin temperature is maintained: perfect protection in cold weather.
- SYMPATEX® HigH<sub>2</sub>Out® is 100% waterproof.

**93683-338**

S3 WR SRC

- Upper material full grain leather
- SYMPATEX® HigH<sub>2</sub>Out®
- PU/TPU sole
- TPU scuff cap
- Width: 12
- EN ISO 20345 S3 WR SRC



REF.	SIZE
93683-338	38-49



**93681-595**

S3 WR SRC

- Upper material full grain leather
- SYMPATEX® HigH<sub>2</sub>Out®
- PU/TPU sole
- Width: 12
- EN ISO 20345 S3 WR SRC

REF.	SIZE
93681-595	38-49



**93665-547**

S3 WR SRC

- Upper material full grain leather
- SYMPATEX® HigH<sub>2</sub> Out®
- PU/TPU sole
- Width: 12
- EN ISO 20345 S3 WR SRC

REF.	SIZE
93665-547	38-49



## BASICS SPORT

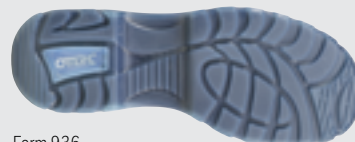
### SPECIAL BENEFITS:

ESD stands for ElectroStaticDischarge. Many products in the OTTER range are ESD certified and have dissipating capabilities according to EN 61340-5-1. The contact resistance ranges between  $1 \times 10^5 \Omega$  to  $3,5 \times 10^7 \Omega$  (= 100 Kilo  $\Omega$  to 35 Mega  $\Omega$ ) which is in the lower antistatic area.



ESD certified safety footwear offer the wearer an additional application in electrostatically sensitive areas, by diminishing any electrostatic charge through appropriate dissipation. They are used frequently, for example, in the handling of electronic components to eliminate damage by static electricity.

### DURABLE HIGH FLEXIBLE PU/TPU OUTSOLE, SRC CERTIFIED



Form 936



Form 984/986/988



Unisex models – offer for women and men in good price-quality ratio

### 98406-587

#### S1 SRC

- Upper material nubuck leather and textile
- Textile lining
- PU/TPU sole
- Width 9 (35-37), Width 11 (38-48)
- EN ISO 20345 S1 SRC

REF.	SIZE
 98406-587	35-48



**98406-678**

S1 SRC

- Upper material suede leather and textile
- Textile lining
- PU/TPU sole
- Width 9 (35-37), Width 11 (38-48)
- EN ISO 20345 S1 SRC

REF.	SIZE
 98406-678	35-48



**98409-778**

S1P SRC

- Upper material nubuck leather and textile
- Textile lining
- PU/TPU sole
- Steel antipuncture midsole
- Width 9 (35-37), Width 11 (38-48)
- EN ISO 20345 S1P SRC

REF.	SIZE
 98409-778	35-48





## BASICS COMFORT

### 98402-554

S2 SRC

- Upper material nubuck and suede leather
- Textile lining
- PU/TPU sole
- Width 9 (35-37), Width 11 (38-48)
- EN ISO 20345 S2 SRC

REF.	SIZE
 98402-554	35-48



### 98405-559

S1 SRC

- Upper material nubuck and suede leather
- Textile lining
- PU/TPU sole
- Width 9 (35-37), Width 11 (38-48)
- EN ISO 20345 S1 SRC

REF.	SIZE
 98405-559	35-48



### 98445-523

S1 SRC

- Upper material nubuck and suede leather
- Premium textile lining
- PU/TPU sole
- Width 9 (35-37), width 11 (38-48)
- EN ISO 20345 S1 SRC

REF.	SIZE
 98445-523	35-48



## BASICS BLACK LINE

### 93623-497

S3 SRC

- Upper material suede leather
- Premium textile lining
- PU/TPU sole
- Width 9 (36-37), Width 12 (38-49)
- EN ISO 20345 S3 SRC

Available in S2 ESD version: 93603-497



REF.	SIZE
93623-497	36-49



### 93673-497

S3 SRC

- Upper material suede leather
- Premium textile lining
- PU/TPU sole
- Width 9 (36-37), Width 12 (38-49)
- EN ISO 20345 S3 SRC

Available in S2 ESD version: 93653-497



REF.	SIZE
93673-497	36-49



### 93629-247

S3 SRC

- Upper material full grain leather
- Textile lining
- PU/TPU sole
- Width 12
- EN ISO 20345 S3 HRO CR SRC

Available in S2: 93609-247

REF.	SIZE
93629-247	36-49



## BASICS BLACK LINE

### 93669-247

S3 SRC

- Upper material full grain leather
- Textile lining
- PU/TPU sole
- Width 12
- EN ISO 20345 S3 HRO CR SRC

Available in S2: 93659-247

REF.	SIZE
93669-247	36-49



## OTTER LADIES

### 98804-682

S2 SRC

- Upper material nubuck leather
- Premium textile lining
- PU/TPU sole
- Width 9 (35-37), Width 11 (38-42)
- EN ISO 20345 S2 SRC

REF.	SIZE
98804-682	35-42



## SPECIFIC CONSTRUCTION

### 93619-448

S3 SRC

- Upper material full grain leather
- Premium textile lining
- PU/TPU sole
- TPU scuff cap
- Width: 12
- EN ISO 20345 S3 SRC

REF.	SIZE
 93619-448	38-49



### 93679-448

S3 SRC

- Upper material full grain leather
- Premium textile lining
- PU/TPU sole
- TPU scuff cap
- Width: 12
- EN ISO 20345 S3 SRC

REF.	SIZE
 93679-448	38-49



## SPECIFIC WINTER

### 93680-613

#### S3 CI WR SRC

- Upper material full grain leather
- Moisture absorbent textile lining and hollow fibre cotton wool offering cold isolation
- PU/TPU sole
- Width: 12
- Textile penetration protection insole board
- EN ISO 20345 S3 CI WR SRC

REF.	SIZE
93680-613	36-49



### 71093-336

#### S3 HRO CI CR SRC

- Upper material high quality Pull-Up leather
- Warm fleecy lining
- PU/Nitrile sole
- Width: 11
- EN ISO 20345 S3 HRO CI CR SRC

REF.	SIZE
71093-336	36-48





## SPECIFIC WHITE

### 60222-040

S2 SRC

- Upper material washable microfibre
- Textile lining
- Single density PU sole
- Width 11
- EN ISO 20345 S2 SRC

REF.	SIZE
60222-040	35-47



### 60717-120

S1 SRC

- Upper material washable microfibre
- Textile lining
- Single density PU sole
- Width 11
- EN ISO 20345 S1 SRC

REF.	SIZE
60717-120	35-47



### 60229-120

S2 SRC

- Upper material washable microfibre
- Textile lining
- Single density PU sole
- Width 11
- Non-metallic toe cap
- EN ISO 20345 S2 SRC

REF.	SIZE
60229-120	35-47

**METAL FREE**



**60322-120**

S2 SRC

- Upper material washable microfibre
- Textile lining
- Single density PU sole
- Width 11
- Non-metallic toe cap
- EN ISO 20345 S2 SRC

REF.	SIZE
60322-120	35-47

**METAL FREE**



**60239-140**

S3 SRC

- Upper material washable microfibre
- Textile lining
- Single density PU sole
- Width 11
- Non-metallic toecap
- Textile penetration protection insole board
- EN ISO 20345 S3 SRC

REF.	SIZE
60239-140	35-47

**METAL FREE**



**60713-010**

SB A E SRC

- Upper material washable microfibre
- Textile lining
- Single density PU sole
- Width 11
- EN ISO 20345 SB A E SRC

*Available in EN ISO 20347 - OB A E FO SRC: 60703-010*

REF.	SIZE
60713-010	35-47



**60711-010**

SB A E SRC

- Upper material washable microfibre
- Textile lining
- Single density PU sole
- Width 11
- EN ISO 20345 SB A E SRC

*Available in EN ISO 20347 - OB A E FO SRC: 60701-010*

REF.	SIZE
60711-010	35-47



**HONEYWELL SAFETY PRODUCTS****UNITED KINGDOM****Honeywell Safety Products Uk Ltd**

Edison Rd

Basingstoke RG21 6QD

United Kingdom

Phone: +44 (0) 1256 693 200

Fax: +44 (0) 1256 693 300

Email: [info-uk.hsp@honeywell.com](mailto:info-uk.hsp@honeywell.com)

**INTERNATIONAL****Honeywell Safety Products Europe SAS**

Immeuble Edison Paris Nord 2

33, rue des Vanesses – CS 55288 Villepinte

95958 Roissy CDG Cedex – France

Phone: +33 (0)1 49 90 79 79

Fax: +33 (0)1 49 90 71 04

Email: [info-export.hsp@honeywell.com](mailto:info-export.hsp@honeywell.com)

**FOR TECHNICAL QUESTIONS****INDUSTRIAL SAFETY PPE TECHNICAL SUPPORT**

Free Phone: 00 800 3344 2803 (free calls in Europe)

Phone: +44 (0) 1698 647 087 (paid calls)

Email: [IS.PPE.TECHSUPPORT.EUROPE@honeywell.com](mailto:IS.PPE.TECHSUPPORT.EUROPE@honeywell.com)